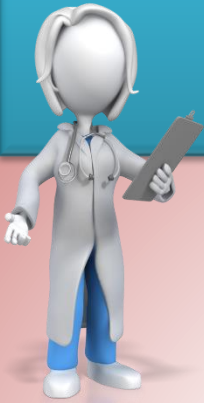


New in SCM

Scheduled Task for Lidocaine 5% Patch in Worklist Manager

Available on July 14th



The Lidocaine Patch Follow-Up Task will be changed from a trough to a scheduled task. This will notify nurses to remove the patch after 12 hours.

| Scheduled: TEST, SJHTW0 (DOB: 11/25/1975) | | | | | | | |
|---|-------------|--|--|--|--|--|---|
| ✓ lidocaine 5% patch [Lidoderm] Apply 1 patch Route:transdermal every 24 hours Special Instructions: 12 hours on, 12 hours off Information from Pharmacy: To prevent lidocaine toxicity, patient should be patch free for 12 hrs daily. Patches may be cut to smaller size prior to removing release liner. | transdermal | | | | | | ↓ |
| Patch Removal Follow Up lidocaine 5% patch | No Route | | | | | | + |

Below is the current Patch Removal Follow-Up trough task.

| Scheduled | | | | | | | |
|---|-------------|--|--|--|--|--|--|
| ✓ lidocaine 5% patch [Lidoderm] Apply 1 patch Route:transdermal every 24 hours Special Instructions: 12 hours on, 12 hours off Information from Pharmacy: To prevent lidocaine toxicity, patient should be patch free for 12 hrs daily. Patches may be cut to smaller size prior to removing release liner. | transdermal | | | | | | |
| Patch Removal Follow Up lidocaine 5% patch | No Route | | | | | | |